



Suction Tube Position Monitor

Introduction

STPM, which stands for Suction Tube Positioning Monitoring, is used as a complete solution for monitoring the position and status of a dredgers suction tube. It can also interface with an additional number of relevant sensors and display there information on screen.

Features

By default STPM supports the following features:

- Day, dusk and night colour schemes
- Draught auto compensation
- Dredging pressure display
- Horizontal and vertical view modes
- Jet pressure display
- Suction vacuum display
- Three horizontal and vertical sections

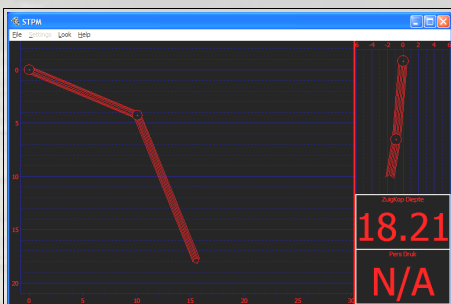


Main STPM screen in default viewing mode.

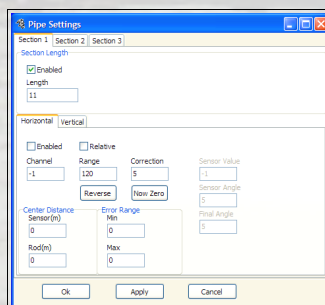
Hardware Set Up

The STPM software works on virtually any PC, by default we supply a 19" industrial PC. The PC interfaces with a black box via a digital connection with cable lengths of up to 100 meters.

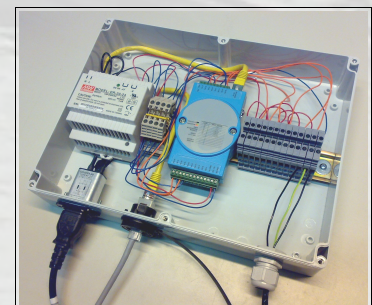
The STPM system uses rugged stainless steel sensors for both pressure and mechanical measurements. Connections between sensors outside the vessel and the black box is done by using the industry standard Subconn™ connectors and highly durable PUR cables.



Night view and larger fonts enabled



Suction tube Settings screen



STPM Interfacing Blackbox